



# Advisory Board

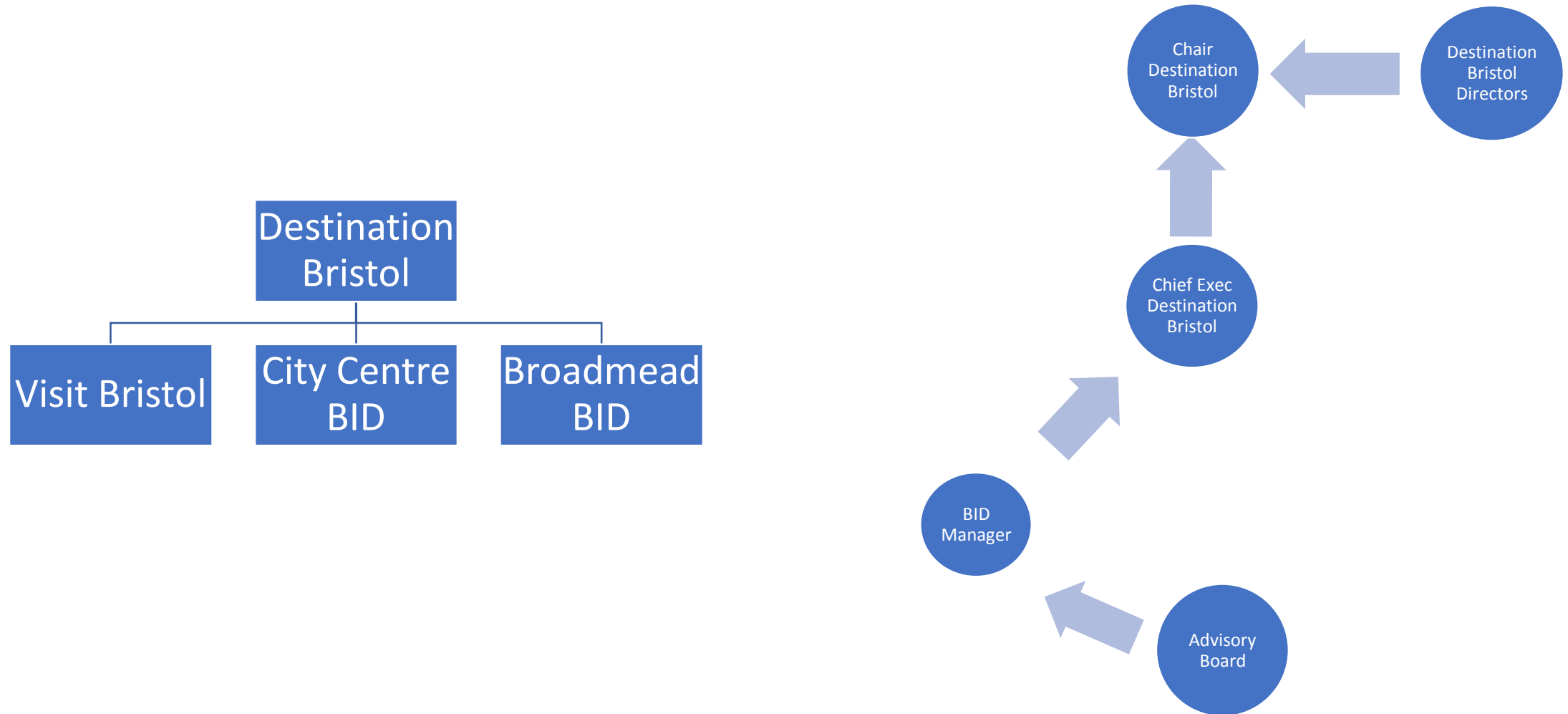
26th October 2017

Introductions.

# How did we get here?

- c. March 2015 smaller BID project starts
- October 2015 – City Centre BID developed following feedback
- Steering Group and later a Strategy Group guided development
- National Guidance and Best Practice followed
- Business plan and prospectus developed
- Ballot June through to July 2017.
- Advisory Board advertised in August/ September 2017

# Organisational Structures



# Objective/ Role of Board

- ✓ represent the interests of all BID levy payers
  - ✓ advise and guide the BID team on projects and issues
  - ✓ advocate for levy payers on strategic issues
  - ✓ challenge BID team and others where appropriate
  - ✓ provide expert advice and guidance
  - ✓ establish best practice and bring new ideas to the group meetings
  - ✓ positively support the BID manager and team and encourage success
  - ✓ identify and help shape solutions to the issues that face the BID area
  - ✓ advise on improvements to BID projects where appropriate.
  - ✓ agree and monitor performance measures for the BID.
- + ...further suggestions?

# Waste Collection Contract

## Specialist advice

- Experts in their field.
- Previous success with BIDs.
- Competitive tender process.
- Defined period to achieve result.
- Flexible from 'bare bones' to 'full service'.
- Has a cash cost.

## Preferred contractor

- Direct relationship.
- Simple to achieve.
- Could run open tender after 12 months.
- How to choose single supplier?
- Lack of expertise (of BID) in what is being offered.

## 'In House'

- No cash cost.
- Expensive in time requirement.
- Unlikely to have similar waste expertise.
- Distraction from other BID activity.

# Promoting – We The Curious/ BID/ UWE

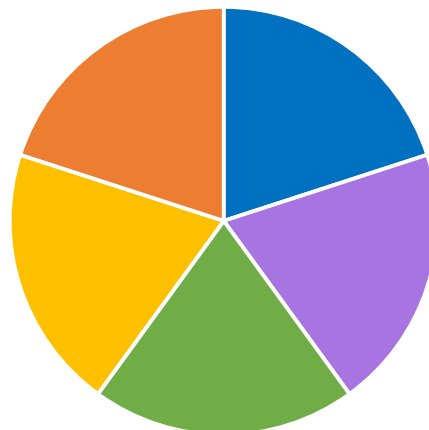
- Engage small businesses
- Publicise success of Bristol
- Support events
- Generate work experience opportunities
- Multi channel media
- Provide interest and information

# BID Priority projects – the first 12 months

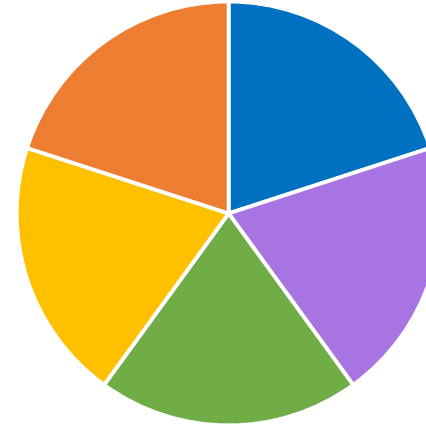
Ambassadors



Cleansing



Street Rangers



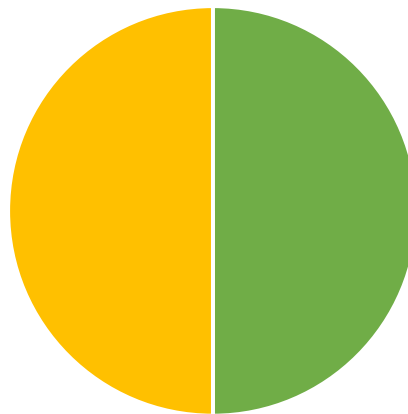
Communication



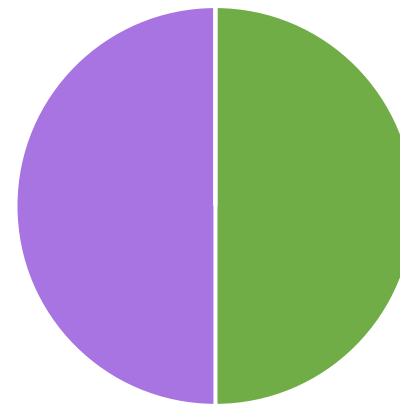
Rough Sleeping



Waste



Planting



Seasonal Lighting

