



BRISTOL CITY CENTRE  
**Business  
Improvement  
District**



**Redcliffe  
& Temple  
BID**

PRESENT



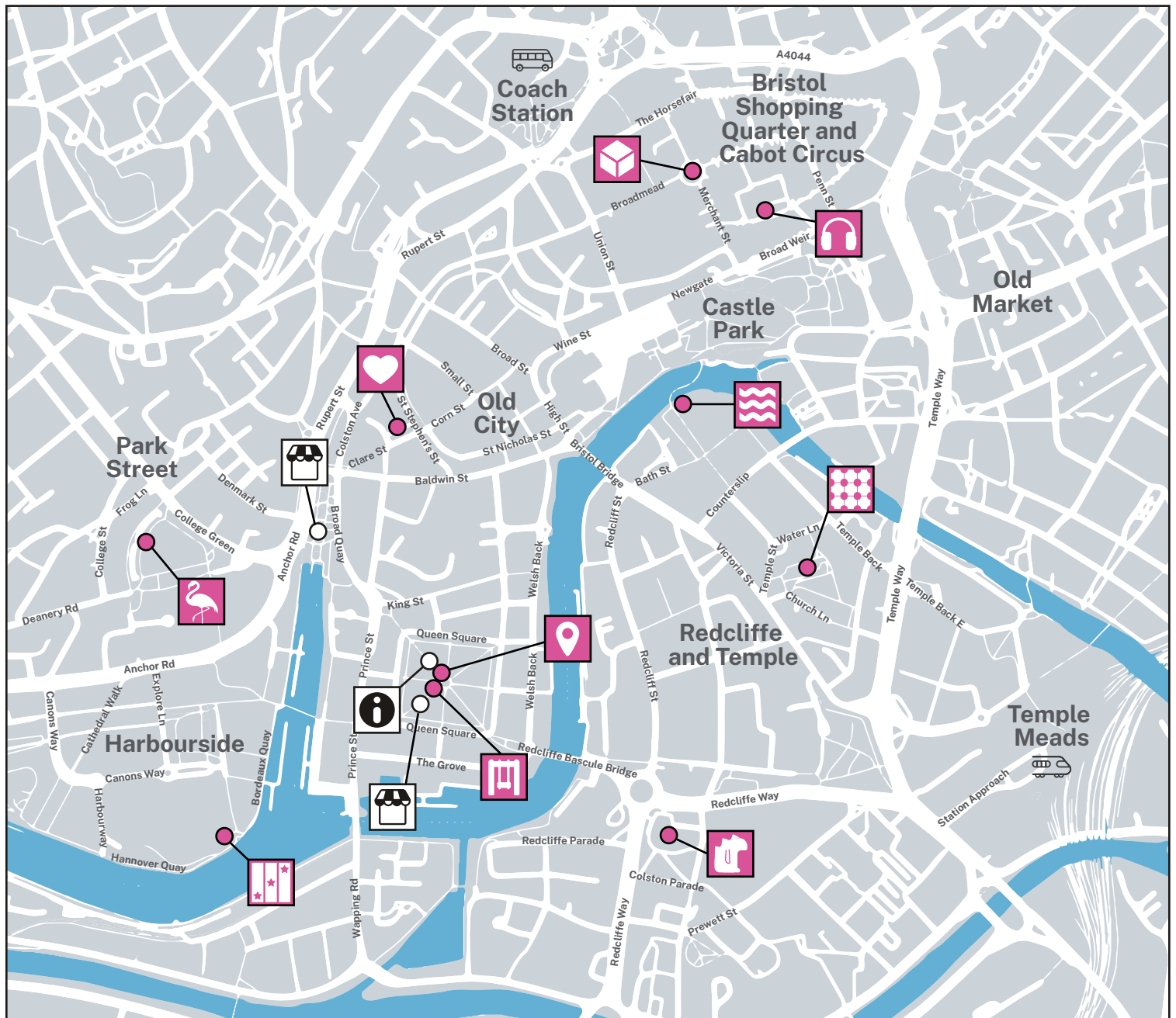
**BRISTOL  
LIGHT  
FESTIVAL**

**31 JANUARY -  
9 FEBRUARY  
2025 / 5-10 PM**

---

[bristollightfestival.com](http://bristollightfestival.com)

# LOCATIONS



## Anthems: Volume One

Marcus Lyall & RUN Collective  
*Quakers Friars, Cabot Circus*  
 ///flats.loops.idea



## Bristol is Always a Good Idea

David Buonaguidi  
*Queen Square*  
 ///task.taken.play



## C-Scales

Bruce Munro Studio  
*Castle Bridge*  
 ///twig.pretty.shield



## Our Beating Heart

Studio Vertigo  
*St Stephen's Church Gardens*  
 ///purple.path.label



## Parallels

Architecture Social Club  
*Temple Church*  
 ///global.tinsel.porch



## Ramandu's Table

Bruce Munro Studio  
*City Hall, College Green*  
 ///diary.cards.wonderfully



## Somnium

Illumaphonium  
*Amphitheatre*  
 ///today.twin.stars



## Swing Song

Bristol Light Festival  
*Queen Square*  
 ///family.harp.plank



## Tetra

Ottomata  
*The Podium, Broadmead*  
 ///calm.images.rally



## The Whilers

Air Giants  
*St Mary Redcliffe Gardens*  
 ///planet.remote.trees



## Information Hut

*Queen Square*  
 ///round.hatch.usage



## Food Market Areas

*Harbourside, Queen Square*



Use the ///what3words app to find precise locations listed above, or you can navigate from our website using our online map.

# INSTALLATIONS

## Anthems: Volume One

Marcus Lyall & RUN Collective

Anthems: Volume One is an immersive laser installation celebrating Bristol's epic Drum & Bass legacy, designed by artist Marcus Lyall, with a soundtrack compiled by Bristol DnB Collective, RUN. The installation acts like a listening bar experience, with abstract visuals paying tribute to some of Bristol's best loved sounds.



@lyallmarcus  
@rundnbuk  
Quakers Friars, Cabot Circus

## Ramandu's Table

Bruce Munro Studio

Taking inspiration from both the original plastic pink flamingo creator Don Featherstone, and from CS Lewis' literature, Ramandu's Table will showcase nature in a whole new light. A flock of over 1,000 flamingos, illuminated with an array of continually changing dawn hues, brings a playful artistry to the traditional flamingo statue associated with front yards in America.



@brucemunrostudio  
City Hall, College Green

## Bristol is Always a Good Idea

David Buonaguidi aka Real Hackney Dave

Following a tour of Bristol over the summer, our commissioned artwork for the 2024 festival makes a welcome return! Best known for his eye-catching art which combines the visual and verbal language of advertising and propaganda, this installation is inspired by the iconic Good Idea print series.



@realhackneydave  
Queen Square

## Somnius

Illumaphonium

Somnius is a cosmic blend of light and sound that responds to the movement of audiences as they gather underneath. The artwork's soundscape and reactive illuminations immerses onlookers in a playful environment made up of over three quarters of a million pixels.

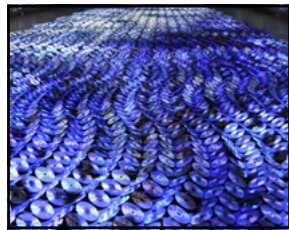


@illumaphonium  
Amphitheatre

## C-Scales

Bruce Munro Studio

C-Scales is an audio-visual installation originally created for, and inspired by Sydney Harbour. This artwork has been reimaged for Bristol Light Festival; an array of animations will be projected onto a suspended façade of more than 1,800 CDs and DVDs. The reflections will paint the landscape and visitors with shimmering threads of light, resulting in a subtly immersive installation.



@brucemunrostudio  
Castle Bridge

## Swing Song

Bristol Light Festival

Originally designed for Bristol Light Festival in 2022, Swing Song has become a much loved icon of the festival programme. After over a million swings, the installation has been rebuilt to be bigger and brighter - to debut in Bristol before going on tour in 2025. Each swing controls a different musical element, swing low for ambient beats, or high for a crescendo.

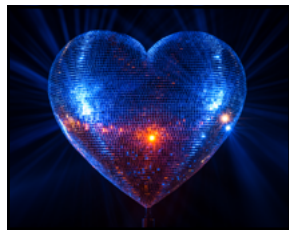


@bristol\_light\_fest  
Queen Square

## Our Beating Heart

Studio Vertigo

Our Beating Heart brings the mirror ball to a grand scale, inspired by the idea of shared love and the disco ball's ability to bring people together. Dapples of light dance and shift, transforming buildings and streets, making each surrounding surface appear to blend into the next.



@studio\_vertigo  
St Stephen's Church Gardens

## Tetra

Ottomata

Tetra is an audio-visual experience that invites audiences to control the visuals and sounds of the installation by using their entire bodies to interact with it. Inspired by the cosmos and the many forces of nature, Tetra encourages spectators to touch and play to dynamically change the artwork.



@ottomata.studio  
The Podium, Broadmead

## Parallels

Architecture Social Club

Parallels is an immersive installation that uses the precision of lasers and mirrors to transform moving footage into floating abstractions of light. Inspired by movements and tones found in the natural world, Parallels uses footage of natural phenomena to offer a transcendent experience of light and sound. Set to a soundtrack by Max Cooper. Best viewed after dark.



@architecturesocialclub  
Temple Church

## The Whilers

Air Giants

A world premiere for Bristol Light Festival, The Whilers will be charming crowds as they interact with each other and with friendly visitors. The Whilers are otherworldly creatures on a journey into the unknown; they use non-verbal sounds and language to communicate with one another and make new friends. Singing, chattering and happily staying a while somewhere new.



@airgiantsHQ  
St Mary Redcliffe Gardens

# INFORMATION

---



## Festival Hub

Our hub is located on Queen Square. In partnership with street food specialists Buoy Events, you will find a variety of food and drinks offerings available, as well as seating to rest your feet mid-journey. Our Information Hut is also located here, where you will find festival stewards pleased to help answer any queries you may have.



## Merchandise

Head to our Information Hut to see what official festival merchandise is available, including Bristol Light Festival prints and light up umbrellas! Scan the QR code to buy prints online.



## Guide AI app

For an audio guide to the festival in English, plus another 11 languages, download the Guide.AI app and search for Guide ID 169

---

## FAQs

### What time will the artworks be switched on?

All artworks will be illuminated from 5pm to 10pm each day. For the best experience, we recommend viewing the installations after dark.

### When is the best time to visit with children?

Weeknights before 7pm are generally quieter, making them ideal for a relaxed experience with children.

### How long will it take to see all of the artworks?

The festival is best enjoyed at a gentle pace, and we would suggest spending about 20 minutes at each installation. Walking the entire festival in one evening takes around 3-4 hours, but with 10 days to explore – why not visit over two or three evenings? Please note, there may be queues at busier times (Thursday – Sunday).

### Is the event accessible?

We've worked hard to make Bristol Light Festival accessible to all. An Accessibility Guide, which will include information on each artwork, is available on our website, and from the Information Hut on Queen Square.

### Is the event sustainable?

We're committed to reducing the environmental impact of the festival by encouraging sustainable travel, reducing waste and using energy-efficient LED lighting. We've taken the Vision 2025 Pledge to significantly reduce the festival's climate impact by 2025. Learn more about our efforts on our website.

For full FAQs, please visit [bristollightfestival.com/FAQ](http://bristollightfestival.com/FAQ)

---



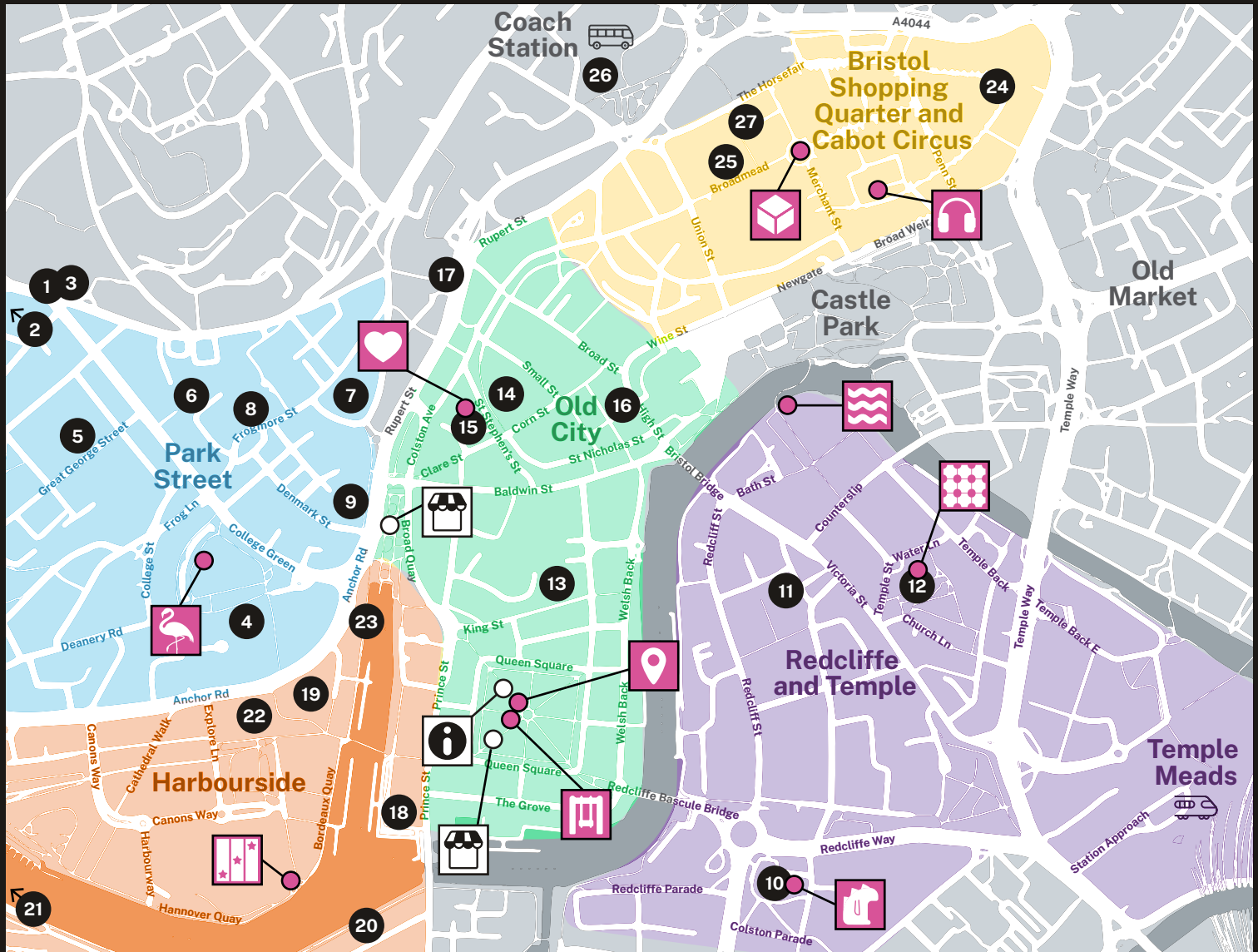
# EXPLORE BRISTOL BY DAY AND BY NIGHT

Bristol is a vibrant city renowned for its creative energy and rich cultural scene.

Use our guide to explore venues from the historic Bristol Cathedral and Harbourside to the contemporary allure of the M Shed and Watershed. Stroll through the atmospheric streets of Old City, where independent shops and eateries blend seamlessly with centuries-old architecture. Enjoy the thriving street

art scene, with murals by globally acclaimed artists like Banksy serving as an ever-present reminder of Bristol's creative spirit.

Bristol Light Festival promises to showcase the best of this vibrant city, combining light, creativity, and culture in unforgettable ways. Whether you're exploring our illuminated art installations or enjoying the welcoming community spirit of the city, here's our guide to exploring Bristol both by day and by night.



- |                                 |                                 |                     |
|---------------------------------|---------------------------------|---------------------|
| 1 Bristol Museum & Art Gallery  | 10 St Mary Redcliffe Church     | 19 Bristol Aquarium |
| 2 Royal West of England Academy | 11 The Fleece                   | 20 M Shed           |
| 3 Wills Memorial Building       | 12 Temple Church                | 21 SS Great Britain |
| 4 Bristol Cathedral             | 13 Bristol Old Vic              | 22 We The Curious   |
| 5 St George's Bristol           | 14 Centrespace                  | 23 Watershed        |
| 6 Bristol Folk House            | 15 St Stephen's Church          | 24 Cabot Circus     |
| 7 Bristol Beacon                | 16 St Nicholas Market           | 25 The Arcade       |
| 8 O2 Academy                    | 17 Christmas Steps Arts Quarter | 26 St James' Priory |
| 9 Bristol Hippodrome            | 18 Arnolfini                    | 27 The New Room     |

# DON'T MISS EVENTS

For full information about all events, and to book, visit [bristolightfestival.com/events](http://bristolightfestival.com/events)

## Lunchtime Talk: Crafting the Zero Moment

31 January / 1 - 2pm — Events Space - Pervasive Media Studio

In this talk, the co-founders of experiential design studio Ottomata, the masterminds behind Bristol Light Festival installation 'Tetra' will share their approach to crafting personally reflective, interactive installations.

## John Sebastian Light Ship's 140th Anniversary

31 January - 9 February - Bathurst Basin

To mark this anniversary, Cabot Cruising Club have designed a beautiful light display to show her off at her best throughout Bristol Light Festival.

## Saturday Art Club

1 February / 10.30 - 11.30am — Bristol Loaf

Perfect for kids aged 4-11, this fun-filled workshop is all about letting your creativity shine.

## Walking Tours

3, 4, 5 & 6 February / 5.30 - 7pm

An opportunity to orientate yourself with the festival and learn about the installations. Choose from a 'waterfront' or 'central' route or join our accessible tour.

## Run to the Lights with LHG Run Club

3 February / 6pm — Left Handed Giant Brewpub

A fun, sociable run around Bristol Light Festival installations - neon clothes and glow sticks encouraged.

## Photography Walk

5 February / 5.30 - 7pm

Capture Bristol Light Festival's installations with award winning photographer Adrian Wyatt.



Photography Walk, Andre Pattenden

## Silent Disco

5 February / 5.30 - 6.45pm — meet at College Green

Explore the Bristol Light Festival like never before, by boogying between art installations accompanied by hit tunes from across the decades. Organised in partnership with Bath Adventures.

## Neon Kids Rave

6 February / 4 - 7pm — Bambalan

Brighten up your February with a neon rave for all the family! A non-stop rave party for both adults and little ones to boogie at Bam.

## Lights Under the Sea

8 February / open until 7pm - Bristol Aquarium

Every day is a world of colour and light under the ocean - experience the aquarium after dark! Special UV animal crafts free of charge with your aquarium ticket.



## Park Street and Queens Road

Park Street and Queens Road are the cultural and historic heart of Bristol, brimming with iconic landmarks and world-class venues. With an eclectic mix of independent boutiques, cafes, and galleries, this area offers an inspiring blend of creativity and heritage.

At the top of Queens Road is **Bristol Museum & Art Gallery (1)**, housing impressive collections of art, archaeology, and natural history, while just around the corner, the **Royal West of England Academy (RWA) (2)** showcases contemporary and classical art in its grand gallery spaces.



Wills Memorial Building, Julian Preece Photography

At the top of Park Street is the iconic **Wills Memorial Building (3)**, with tours taking place every Saturday. Nearby, **Bristol Cathedral (4)** enchants visitors with its Gothic architecture and tranquil gardens, while **St George's Bristol (5)**, renowned for its exceptional acoustics, hosts an eclectic programme of live music and performances.

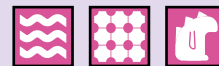
Creative souls will enjoy the welcoming **Bristol Folk House (6)** offering workshops, music nights and community events.

Don't miss **Bristol Beacon (7)**, for live music and creativity, attracting top-tier performances and fostering local talent. Just around the corner, is the **O2 Academy (8)** hosting the best emerging musical talent through to the biggest international artists.

A short walk leads to the iconic **Bristol Hippodrome (9)**, Bristol's premier theatre for musicals, ballet, and opera.

This dynamic area is a must-visit for anyone seeking Bristol's artistic and cultural essence.

For more information, visit [bristolightfestival.com/culture](http://bristolightfestival.com/culture)



## Redcliffe and Temple



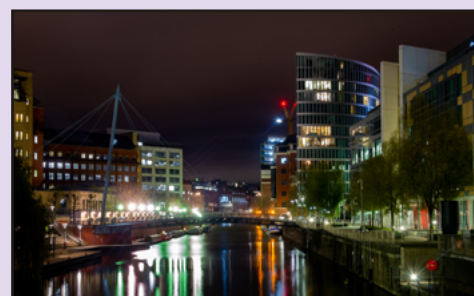
Left Handed Giant, Finzels Reach, Julian Preece Photography

Redcliffe and Temple are vibrant districts in Bristol, steeped in history and brimming with cultural and architectural treasures. Dominating the skyline is **St Mary Redcliffe Church (10)**, a masterpiece of Gothic architecture, its intricate details and serene atmosphere make it a must-visit for history and art enthusiasts.



St Mary Redcliffe Church, @agracefulview

The area also boasts a thriving live music scene from **The Fleece (11)**, one of Bristol's most iconic music venues. Renowned for its intimate setting, it has hosted legendary artists and continues to champion emerging talent.



Temple Quay, Paul Gillis

A stroll through the district reveals a blend of historic charm and modern innovation. Discover **Temple Church (12)**, a striking ruin with a leaning tower, or explore the bustling riverside, dotted with cafes and pubs offering scenic views.

For more information, visit [bristolightfestival.com/culture](http://bristolightfestival.com/culture)



## Old City

Bristol's Old City is a charming district that blends centuries of history with a lively cultural and creative scene. Its cobbled streets are home to some of the city's most treasured landmarks, offering a unique mix of heritage and modern attractions.

At its heart lies **Bristol Old Vic (13)**, the UK's oldest continually working theatre, where groundbreaking performances and a rich history collide. A short walk away, **Centrespace (14)** offers an intimate venue for exhibitions and events, showcasing local talent and fostering a creative community.



Bristol Old Vic, Julian Preece Photography

Close by is **St Stephen's Church (15)**, a peaceful haven amid the bustling streets, delighting visitors with its stunning architecture and serene atmosphere. Just a short stroll away, **St Nicholas Market (16)** is a sensory delight, brimming with independent traders, artisanal food, and eclectic goods – perfect for those seeking a taste of Bristol's vibrant spirit.



St Stephen's Avenue, Julian Preece Photography

You'll find a unique collection of independent businesses at the **Christmas Steps Arts Quarter (17)**, weaving together history and charm in the centre of the city, lined with over 50 independent shops, galleries, and cafes to explore. A great area to wander, relax, indulge and be inspired.



## Harbourside

Once a bustling dockyard, Bristol Harbourside has been transformed into a lively area where visitors can explore world-class attractions, relax by the water, and soak up the city's creative energy in a stunning setting.



Harbourside, Shotaway

Art enthusiasts will love **Arnolfini (18)**, one of Europe's leading centres for contemporary arts, offering thought-provoking exhibitions and events. For a journey into the natural world, **Bristol Aquarium (19)** invites you to discover fascinating marine life and underwater ecosystems.

Dive into Bristol's history at **M Shed (20)**, a museum dedicated to the city's people, stories, and achievements, or step aboard the iconic **SS Great Britain (21)**, a pioneering steamship that shaped global travel.



Wapping Wharf, Shotaway

Curiosity and creativity come alive at **We The Curious (22)**, a science and arts centre full of interactive exhibits and experiences for all ages. Meanwhile, film and media lovers can visit **Watershed (23)**, Bristol's hub for independent cinema and digital innovation.

With its picturesque views, waterside cafes, and buzzing atmosphere, Bristol's Harbourside is the perfect place to explore the city's rich heritage and dynamic culture. It's a must-visit for anyone seeking the best of Bristol.



## Bristol Shopping Quarter and Cabot Circus

Bristol Shopping Quarter, encompassing **Cabot Circus (24)**, Broadmead, The Galleries, and The Arcade, has evolved from a historic trading hub into the city's premier retail and cultural destination.



Cabot Circus, Giles Rocholl

At its heart, Cabot Circus, opened in 2008, transforming the shopping experience with its striking architecture and pedestrian-friendly spaces. Beyond retail, the centre hosts events and seasonal activities, adding a vibrant community feel to the area.

Cultural gems surround the quarter, offering more than just shopping. **The Arcade (25)**, a beautifully preserved Victorian shopping arcade, is a nod to the area's rich architectural past, housing unique independent stores and eateries. Nearby, **St James' Priory (26)**, Bristol's oldest building dating back to the 12th century, provides a serene retreat amid the hustle and bustle.



John Wesley's New Room, The New Room

**The New Room (27)**, located in the heart of Broadmead, is a hidden gem of Bristol's history and a significant cultural landmark. Built in 1739, it is the oldest Methodist chapel in the world, founded by John Wesley, one of the key figures of the Methodist movement.

For more information, visit [bristolightfestival.com/culture](http://bristolightfestival.com/culture)

For more information, visit [bristolightfestival.com/culture](http://bristolightfestival.com/culture)

For more information, visit [bristolightfestival.com/culture](http://bristolightfestival.com/culture)

IN PARTNERSHIP WITH:



---

Follow us on socials and tag us in your photos:

 @bristol\_light\_fest

 BristolLightFestival

 @bristol\_light

---

**BRISTOL**  
**LiGHT**  
**FESTiVAL**

**EXPLORE**  
**BRISTOL**  
**THROUGH**  
**LIGHT**